

TO THE ZOO



A Free Project Sheet
NOT FOR RESALE

By Anni Downs



Quilt Design by Anni Downs

Quilt 1

Skill Level: Beginner

 Henry Glass & Co., Inc.



facebook

Finished Quilt Size: 37 1/2" x 48"
49 West 37th Street, New York, NY 10018
tel: 212-686-5194 fax: 212-532-3525
Toll Free: 800-294-9495
www.henryglassfabrics.com

TO THE ZOO Quilt 1

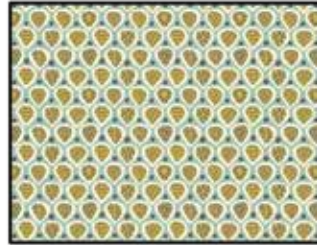
Fabrics in the Collection



Zoo Panel - Cream
8906P-44



Guitar Pic - Gray
8907-11



Guitar Pic - Aqua
8907-17



Guitar Pic - Dusty Pink
8907-22



Stripe - Blue Gray Stripe
8908-17



Stripe - Multi Color Stripe
8908-42



Dashes - Gray
8909-11



Dashes - Pink
8909-22



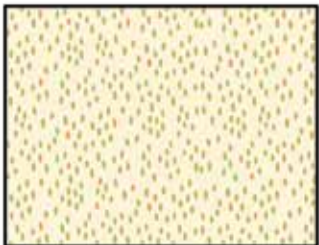
Dashes - Cream
8909-44



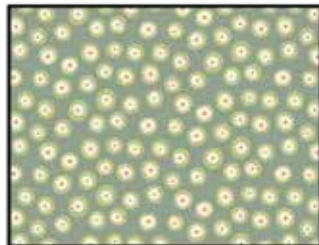
Raindrops - Gray
8910-11



Raindrops - Aqua
8910-17



Raindrops - Cream
8910-46



Daisy Dots - Dusty Blue
8911-17



Daisy Dots - Pink
8911-22



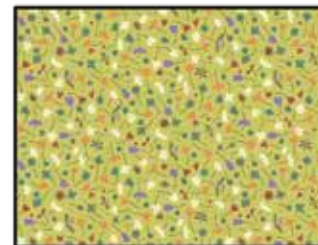
Daisy Dots - Green
8911-66



Tossed Wildflowers - Med. Gray
8912-11



Tossed Wildflowers - Cream
8912-44



Tossed Wildflowers - Green
8912-66

Materials

Fat 1/8	Raindrops - Cream (A)	8910-46
Fat 1/8	Guitar Pic - Aqua (B)	8907-17
Fat 1/8	Guitar Pic - Dusty Pink (C)	8907-22
Fat 1/8	Dashes - Gray (D)	8909-11
Fat 1/8	Tossed Wildflowers - Cream (E)	8912-44
Fat 1/8	Raindrops - Gray (F)	8910-11
Fat 1/8	Raindrops - Aqua (G)	8910-17
Fat 1/8	Daisy Dots - Dusty Blue (H)	8911-17
Fat 1/8	Daisy Dots - Pink (I)	8911-22
Fat 1/8	Daisy Dots - Green (J)	8911-66
Fat 1/8	Tossed Wildflowers - Med. Gray (K)	8912-11
Fat 1/8	Tossed Wildflowers - Green (L)	8912-66
1 panel	Zoo Panel - Cream (M)	8906P-44
1/2 yard	Stripe - Multi Color Stripe (N)	8908-42
2 3/4 yards	Tossed Wildflowers - Cream (Backing)	8912-44

*Includes binding

Cutting Instructions

Please note: all strips are cut across the width of fabric (WOF) from selvage to selvage edge unless otherwise noted.

From the Raindrops - Cream (A), cut:

- (2) 2 1/4" x 6 1/2" strips.
- (2) 2" x 6 1/2" strips.
- (4) 1 3/4" x 6 1/2" strips.
- (2) 1 1/2" x 6 1/2" strips.
- (2) 1 1/4" x 6 1/2" strips.

From the Guitar Pic - Aqua (B), cut:

- (2) 2 1/4" x 6 1/2" strips.
- (2) 2" x 6 1/2" strips.
- (4) 1 3/4" x 6 1/2" strips.
- (2) 1 1/2" x 6 1/2" strips.
- (2) 1 1/4" x 6 1/2" strips.

From the Guitar Pic - Dusty Pink (C), cut:

- (2) 2 1/4" x 6 1/2" strips.
- (2) 2" x 6 1/2" strips.
- (4) 1 3/4" x 6 1/2" strips.
- (2) 1 1/2" x 6 1/2" strips.
- (2) 1 1/4" x 6 1/2" strips.

From the Dashes - Gray (D), cut:

- (2) 2 1/4" x 6 1/2" strips.
- (2) 2" x 6 1/2" strips.
- (4) 1 3/4" x 6 1/2" strips.
- (2) 1 1/2" x 6 1/2" strips.
- (2) 1 1/4" x 6 1/2" strips.

From the Tossed Wildflowers - Cream (E), cut:

- (2) 2 1/4" x 6 1/2" strips.
- (2) 2" x 6 1/2" strips.
- (4) 1 3/4" x 6 1/2" strips.
- (2) 1 1/2" x 6 1/2" strips.
- (2) 1 1/4" x 6 1/2" strips.

From the Raindrops - Gray (F), cut:

- (2) 2 1/4" x 6 1/2" strips.
- (2) 2" x 6 1/2" strips.
- (4) 1 3/4" x 6 1/2" strips.
- (2) 1 1/2" x 6 1/2" strips.
- (2) 1 1/4" x 6 1/2" strips.

From the Raindrops - Aqua (G), cut:

- (2) 2 1/4" x 6 1/2" strips.
- (2) 2" x 6 1/2" strips.
- (4) 1 3/4" x 6 1/2" strips.
- (2) 1 1/2" x 6 1/2" strips.
- (2) 1 1/4" x 6 1/2" strips.

From the Daisy Dots - Dusty Blue (H), cut:

- (2) 2 1/4" x 6 1/2" strips.
- (2) 2" x 6 1/2" strips.
- (4) 1 3/4" x 6 1/2" strips.
- (2) 1 1/2" x 6 1/2" strips.
- (2) 1 1/4" x 6 1/2" strips.

From the Daisy Dots - Pink (I), cut:

- (2) 2 1/4" x 6 1/2" strips.
- (2) 2" x 6 1/2" strips.
- (4) 1 3/4" x 6 1/2" strips.
- (2) 1 1/2" x 6 1/2" strips.
- (2) 1 1/4" x 6 1/2" strips.

From the Daisy Dots - Green (J), cut:

- (2) 2 1/4" x 6 1/2" strips.
- (2) 2" x 6 1/2" strips.
- (4) 1 3/4" x 6 1/2" strips.
- (2) 1 1/2" x 6 1/2" strips.
- (2) 1 1/4" x 6 1/2" strips.

From the Tossed Wildflowers - Med. Gray (K), cut:

- (2) 2 1/4" x 6 1/2" strips.
- (2) 2" x 6 1/2" strips.
- (4) 1 3/4" x 6 1/2" strips.
- (2) 1 1/2" x 6 1/2" strips.
- (2) 1 1/4" x 6 1/2" strips.

From the Tossed Wildflowers - Green (L), cut:

- (2) 2 1/4" x 6 1/2" strips.
- (2) 2" x 6 1/2" strips.
- (4) 1 3/4" x 6 1/2" strips.
- (2) 1 1/2" x 6 1/2" strips.
- (2) 1 1/4" x 6 1/2" strips.

From the Zoo Panel - Cream (M), fussy cut:

- (1) 23" x 36 1/2" panel.

From the Stripe - Multi Color Stripe (N), cut:

- (5) 2 1/2" x WOF strips for the binding.

From the Tossed Wildflowers - Cream (Backing), cut:

- (2) 46" x WOF strips for the backing. Sew the strips together and trim to make the 46" x 56" back.

Sewing Instructions

1. Lay out the assorted strips into (11) sets for Block One and (11) sets for Block Two, following the order shown in Figure 1 and Figure 2 based on the strip width. *Note: You will have extra strips.*

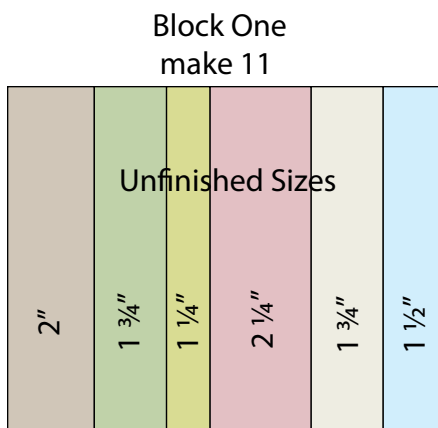


Fig. 1

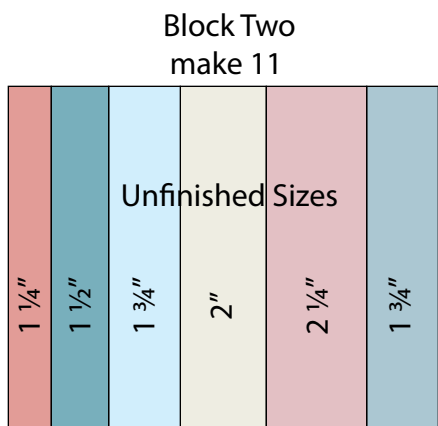


Fig. 2

2. Sew (1) 2" x 6 1/2" strip, (1) 1 3/4" x 6 1/2" strip, (1) 1 1/4" x 6 1/2" strip, (1) 2 1/4" x 6 1/2" strip, (1) 1 3/4" x 6 1/2" strip and (1) 1 1/2" x 6 1/2" strip together lengthwise and in that order to make (1) Block One rectangle (Fig. 1). Repeat to make (11) Block One rectangles total.

3. Sew (1) 1 1/4" x 6 1/2" strip, (1) 1 1/2" x 6 1/2" strip, (1) 1 3/4" x 6 1/2" strip, (1) 2" x 6 1/2" strip, (1) 2 1/4" x 6 1/2" strip and (1) 1 3/4" x 6 1/2" strip together lengthwise and in that order to make (1) Block Two rectangle (Fig. 2). Repeat to make (11) Block Two rectangles total.

Quilt Top Assembly

(Refer to the Quilt Layout while assembling.)

4. Sew (3) Block Two rectangles and (3) Block One rectangles together, alternating them. Repeat to make a second strip. Sew (1) strip to each side of the Fabric M panel.

5. Sew (3) Block One rectangles and (2) Block Two rectangles together. Sew the strip to the top of the Fabric M panel.

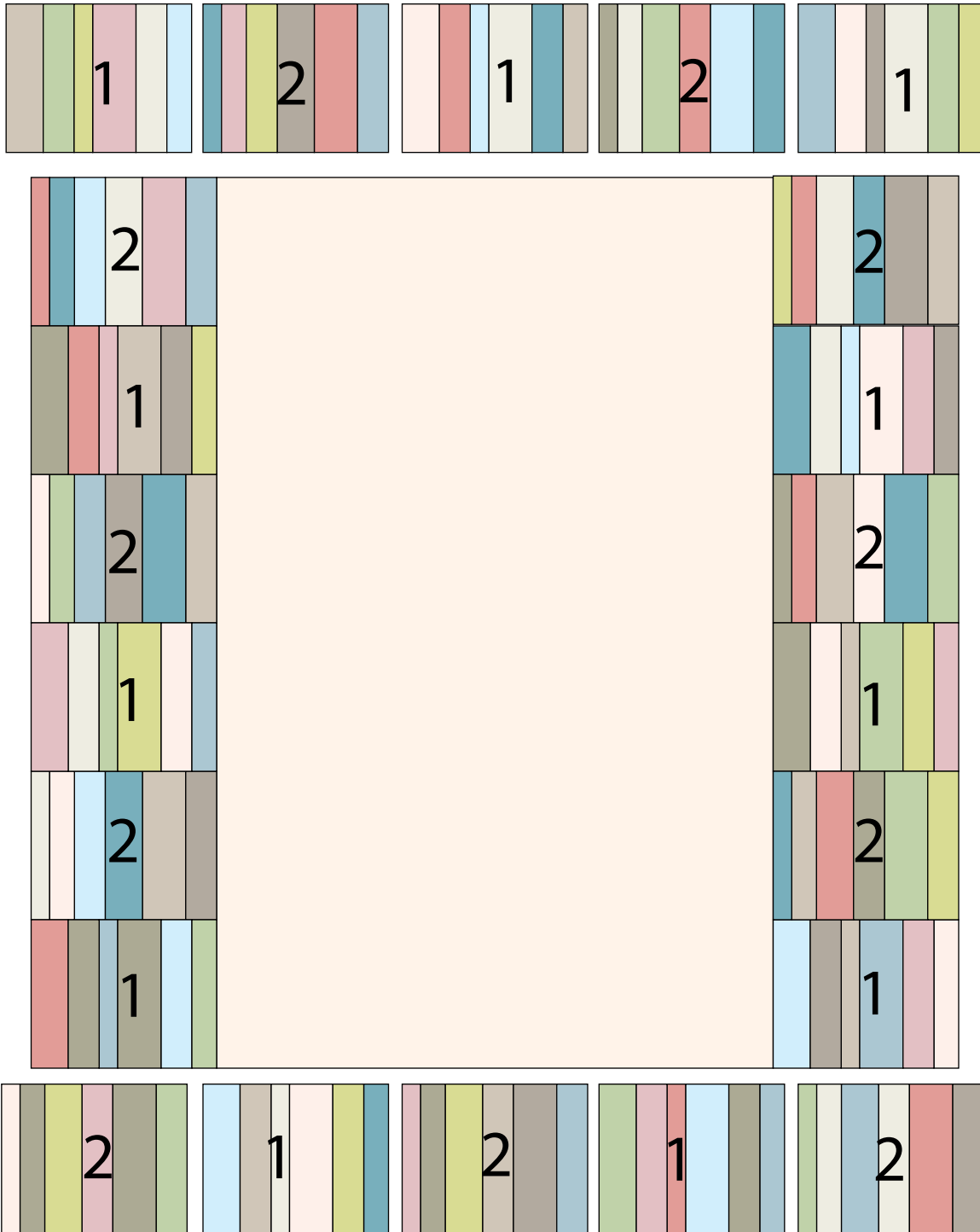
6. Sew (3) Block Two rectangles and (2) Block One rectangles together. Sew the strip to the bottom of the Fabric M panel to make the quilt top.

7. Layer and quilt as desired.

8. Sew the (5) 2 1/2" x WOF Fabric N strips together, end to end with 45-degree seams, to make the binding. Fold this long strip in half lengthwise with wrong sides together and press.

9. Bind as desired.

TO THE ZOO Quilt 1



Quilt Layout

Every effort has been made to ensure that all projects are error free. All the information is presented in good faith, however no warranty can be given nor results guaranteed as we have no control over the execution of instructions. Therefore, we assume no responsibility for the use of this information or damages that may occur as a result. When errors are brought to our attention, we make every effort to correct and post a revision as soon as possible. Please make sure to check www.henryglassfabrics.com for pattern updates prior to starting the project. We also recommend that you test the project prior to cutting for kits. Finally, all free projects are intended to remain free to you and are not for resale.