

Garden Whimsy


By Anni Downs



Bag

Skill Level: Advanced Beginner

A Free Project Sheet From

 **Henry Glass & Co., Inc.**



[facebook](#)

Finished Bag Size: 10" x 14" x 3"
49 West 37th Street, New York, NY 10018
tel: 212-686-5194 fax: 212-532-3525
Toll Free: 800-294-9495
www.henryglassfabrics.com

GARDEN WHIMSY

Finished Bag Size: 10" x 14" x 3"

Bag

Fabrics in the Collection



Large Floral Border - Peach
8672-22



Large Floral Border - Raisin
8672-58



Large Floral Border - Charcoal
8672-98



Small Floral Toss - Tobacco
8673-39



Small Floral Toss - Taupe
8673-49



Small Floral Toss - Green
8673-66



Cross Stitch Texture - Slate Blue
8674-17



Cross Stitch Texture - Butter
8674-33



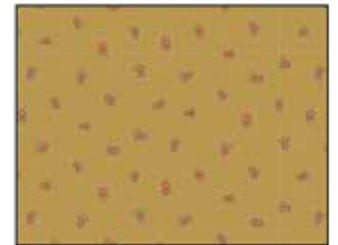
Ticking Dot - Butter/Rose
8675-32



Ticking Dot - Raisin
8675-58



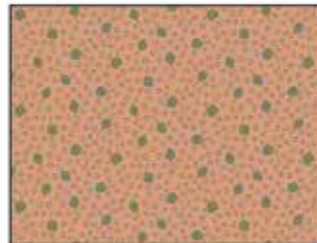
Berry - Lt. Blue
8676-17



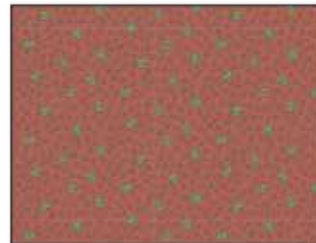
Berry - Gold
8676-33



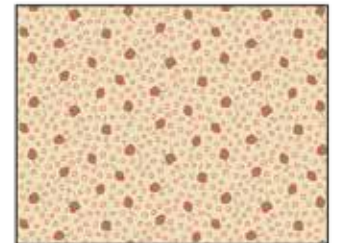
Berry - Taupe
8676-49



Tossed Bud - Peach
8677-22



Tossed Bud - Lt. Rose
8677-28



Tossed Bud - Cream
8677-44



Dandelion - Lt. Blue
8678-17



Dandelion - Tobacco
8678-39



Dandelion - Green
8678-66

Materials

1/8 yard	Small Floral Toss - Tobacco (A)	8673-39
1/8 yard	Small Floral Toss - Taupe (B)	8673-49
1/8 yard	Small Floral Toss - Green (C)	8673-66
1/8 yard	Cross Stitch Texture - Slate Blue (D)	8674-17
1/8 yard	Ticking Dot - Raisin (E)	8675-58
1/8 yard	Berry - Lt. Blue (F)	8676-17
1/8 yard	Berry - Gold (G)	8676-33
1/8 yard	Berry - Taupe (H)	8676-49
1/8 yard	Tossed Bud - Peach (I)	8677-22
1/8 yard	Tossed Bud - Lt. Rose (J)	8677-28
1/8 yard	Dandelion - Lt. Blue (K)	8678-17
1/8 yard	Dandelion - Tobacco (L)	8678-39
1/8 yard	Dandelion - Green (M)	8678-66
1/8 yard	Large Floral Border - Peach (N)	8672-22
1/3 yard	Large Floral Border - Raisin (O)	8672-58
1/8 yard	Large Floral Border - Charcoal (P)	8672-98
7/8 yard	Tossed Bud - Cream (Q)	8677-44

You will need:

- Fusible Fleece

Bag Cutting Instructions

Please note: all strips are cut across the width of fabric (WOF) from selvage to selvage edge unless otherwise noted.

From the Small Floral Toss - Tobacco (A), cut:

- (1) 2 1/2" x WOF strip. Sub-cut strip into (6) 2 1/2" squares.

From the Small Floral Toss - Taupe (B), cut:

- (1) 2 1/2" x WOF strip. Sub-cut strip into (4) 2 1/2" squares.

From the Small Floral Toss - Green (C), cut:

- (1) 2 1/2" x WOF strip. Sub-cut strip into (4) 2 1/2" squares.

From the Cross Stitch Texture - Slate Blue (D), cut:

- (1) 2 1/2" x WOF strip. Sub-cut strip into (4) 2 1/2" squares.

From the Ticking Dot - Raisin (E), cut:

- (1) 2 1/2" x WOF strip. Sub-cut strip into (4) 2 1/2" squares.

From the Berry - Lt. Blue (F), cut:

- (1) 2 1/2" x WOF strip. Sub-cut strip into (4) 2 1/2" squares.

From the Berry - Gold (G), cut:

- (1) 2 1/2" x WOF strip. Sub-cut strip into (4) 2 1/2" squares.

From the Berry - Taupe (H), cut:

- (1) 2 1/2" x WOF strip. Sub-cut strip into (4) 2 1/2" squares.

From the Tossed Bud - Peach (I), cut:

- (1) 2 1/2" x WOF strip. Sub-cut strip into (4) 2 1/2" squares.

From the Tossed Bud - Lt. Rose (J), cut:

- (1) 2 1/2" x WOF strip. Sub-cut strip into (8) 2 1/2" squares.

From the Dandelion - Lt. Blue (K), cut:

- (1) 2 1/2" x WOF strip. Sub-cut strip into (4) 2 1/2" squares.

From the Dandelion - Tobacco (L), cut:

- (1) 2 1/2" x WOF strip. Sub-cut strip into (4) 2 1/2" squares.

From the Dandelion - Green (M), cut:

- (1) 2 1/2" x WOF strip. Sub-cut strip into (4) 2 1/2" squares.

From the Large Floral Border - Peach (N), cut:

- (1) 2 1/2" x WOF strip. Sub-cut strip into (4) 2 1/2" squares.

From the Large Floral Border - Raisin (O), cut:

- (1) 2 1/2" x WOF strip. Sub-cut strip into (4) 2 1/2" squares.
- (1) 3 1/2" x WOF strip. Sub-cut strip into (2) 3 1/2" x 10 1/2" strips and (1) 3 1/2" x 14 1/2" strip.
- (1) 2" x WOF strip. Sub-cut strip into (2) 2" x 21" strips.

From the Large Floral Border - Charcoal (P), cut:

- (1) 2 1/2" x WOF strip. Sub-cut strip into (4) 2 1/2" squares.

From the Tossed Bud - Cream (Q), cut:

- (1) 10 1/2" x WOF strip. Sub-cut strip into (2) 10 1/2" x 14 1/2" strips.
- (1) 3 1/2" x WOF strip. Sub-cut strip into (2) 3 1/2" x 10 1/2" strips and (1) 3 1/2" x 14 1/2" strip.
- (1) 2" x WOF strip. Sub-cut strip into (2) 2" x 21" strips.
- (1) 8 1/2" x WOF strip. Sub-cut strip into (2) 8 1/2" x 10 1/2" strips.

From the Fusible Fleece, cut:

- (2) 10 1/2" x 14 1/2" strips
- (2) 3 1/2" x 10 1/2" strips
- (1) 3 1/2" x 14 1/2" strips
- (2) 2" x 21" strips

Sewing Instructions

1. Follow Figure 1 and sew (35) assorted 2 1/2" squares into (5) rows of seven squares each to make (1) Bag Front (Fig. 1). Repeat to make (1) Bag Back.

make 2



Fig. 1

2. Iron the 10 ½" x 14 ½" pieces of fusible fleece to the wrong side of the Bag Front and back. Iron the 3 ½" x 10 ½" pieces of fusible fleece to the wrong side of each of the Fabric O bag sides. Iron the 3 ½" x 14 ½" piece of fusible fleece to the wrong side of the Fabric O bag bottom. Iron the 2" x 21" pieces of fusible fleece to the wrong side of the Fabric O bag handle strips. Quilt all except the handles as desired.

3. Sew the 3 ½" x 10 ½" Fabric O side panels to the bag front and back stopping ¼" from the base of the bag (Fig. 2).

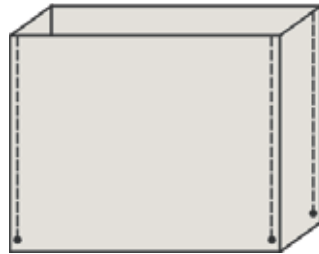


Fig. 2

4. Sew the Fabric O bag base to the bottom of the bag sides, one side at a time, stopping and starting ¼" from each corner to make the outer bag (Fig. 3).



Fig. 3

5. Place 2" x 21" Fabric O handle strip and 2" x 21" Fabric Q lining handle strip right sides together and sew along the long sides only to make the strap. Turn the strip right side out and press. Topstitch along each long edge of the strap to finish (Fig. 4). Repeat to make the second strap.

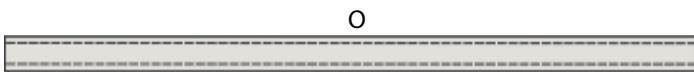


Fig. 4

6. Position one strap, raw edges even with the top of the outer bag, 3" in from either edge of the bag front, right sides together, pin or baste the handle in place (Fig. 5). Repeat with the second side of the outer bag and second strap.

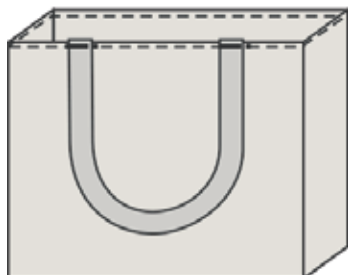


Fig. 5

7. Fold the 8 ½" x 10 ½" Fabric Q piece with right sides together to measure 5 ¼" x 8 ½". Sew around all the raw edges, leaving a small opening along one side for turning, right side out (Fig. 6). Clip corners, turn right side out. Sew the opening closed and press. Repeat for the second 8 ½" x 10 ½" lining piece.



Fig. 6

8. Position the pocket blocks in the center of each 10 ½" x 14 ½" Fabric Q Lining piece. Topstitch down each side and across the bottom of the pockets (Fig. 7).

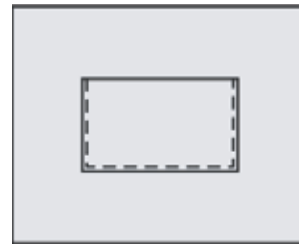


Fig. 7

9. Repeat Steps 3 and 4 with the Fabric Q lining pieces, leaving a 5" opening in one side for turning to make the lining.

10. Place the outer bag inside the bag lining, right sides together. Pin along the top raw edges, making sure all seams are matching and the handles are sandwiched in between (Fig. 8). Sew around the top of the bag.

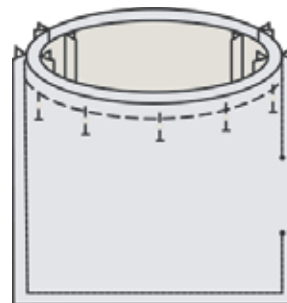


Fig. 8

11. Turn the bag right side out through the opening in the lining. Sew the opening closed. Top-stitch along the top of the bag.

Every effort has been made to ensure that all projects are error free. All the information is presented in good faith, however no warranty can be given nor results guaranteed as we have no control over the execution of instructions. Therefore, we assume no responsibility for the use of this information or damages that may occur as a result. When errors are brought to our attention, we make every effort to correct and post a revision as soon as possible. Please make sure to check www.henryglassfabrics.com for pattern updates prior to starting the project. We also recommend that you test the project prior to cutting for kits. Finally, all free projects are intended to remain free to you and are not for resale.