

Celebrating Christmas

By Anni Downs




A Free Project Sheet
NOT FOR RESALE



Garland & Tags

Skill Level: Beginner

 Henry Glass & Co., Inc.



facebook

49 West 37th Street, New York, NY 10018
tel: 212-686-5194 fax: 212-532-3525
Toll Free: 800-294-9495
www.henryglassfabrics.com

CELEBRATING CHRISTMAS

Garland & Tags

Fabrics in the Collection



Large Characters w/ Border - Lt. Blue
8750-11



Large Characters w/ Border - Cream
8750-44



Stripe - Pink
8751-22



Stripe - Taupe
8751-38



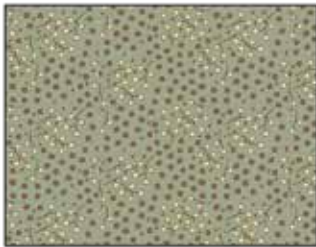
Sprig Toss - Lt. Blue
8752-11



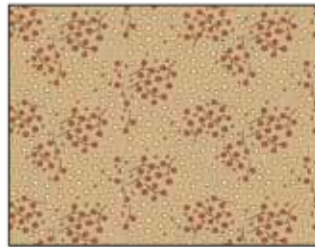
Sprig Toss - Tan
8752-33



Sprig Toss - Red
8752-88



Berries - Lt. Blue
8753-11



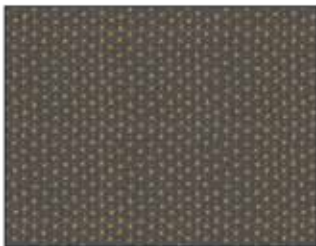
Berries - Tan
8753-33



Berries - Brown
8753-38



Mini Snowflakes - Cream
8754-44



Mini Snowflakes - Navy
8754-77



Mini Snowflakes - Red
8754-88



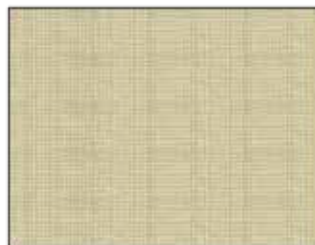
Large Snowflakes - Pink
8755-22



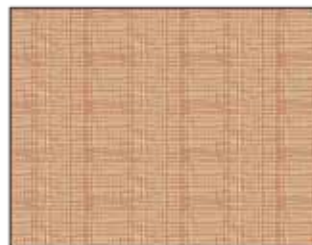
Large Snowflakes - Taupe
8755-39



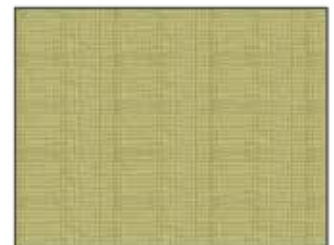
Large Snowflakes - Cream
8755-44



Mini Check - Cream Blue
8756-41



Mini Check - Cream Red
8756-42



Mini Check - Green
8756-66

Materials

½ yard	Large Characters w/Borders - Lt. Blue (A)	8750-11
¼ yard	Sprig Toss - Red (B)	8752-88
¼ yard	Stripe - Taupe (C)	8751-38
¼ yard	Stripe - Pink (D)	8751-22
¼ yard	Mini Check - Cream Red (E)	8756-42
⅛ yard	Mini Snowflakes - Navy (F)	8754-77
⅛ yard	Berries - Lt. Blue (G)	8753-11
⅛ yard	Large Snowflakes - Pink (H)	8755-22
⅓ yard	Mini Snowflakes - Cream (I)	8754-44
¼ yard	Mini Check - Cream Blue (J)	8756-41

You will also need:

- Template Plastic
- ¼" ribbon

Cutting Instructions

Please note: all strips are cut across the width of fabric (WOF) from selvage to selvage unless otherwise noted.

From the Large Characters w/Borders - Lt. Blue (A):

- See instructions to cut (3) large circles, (2) medium circles and (7) small circles.

From the Sprig Toss - Red (B), cut:

- (1) 3 ¾" x WOF strip. Sub-cut strip into (3) 3 ¾" squares (large) and (5) 2 ¼" squares (small).

From the Stripe - Taupe (C), cut:

- See instructions to cut three Large Tags.

From the Stripe - Pink (D), cut:

- See instructions to cut five small tags.

From the Mini Check - Cream Red (E), cut:

- See instructions to cut two medium tags and one small tag.

From the Mini Snowflakes - Navy (F), cut:

- (1) 3 ¼" x WOF strip. Sub-cut strip into (2) 3 ¼" squares (medium) and (1) 2 ¼" square (small).

From the Berries - Lt. Blue (G), cut:

- See instructions to cut one small tag.

From the Large Snowflakes - Pink (H), cut:

- (1) 2 ¼" square (small).

From the Mini Snowflakes - Cream (I), cut:

- (1) 4 ½" x WOF strip. Sub-cut strip into (3) 4 ½" x 6" strips and (2) 4" x 4 ½" strips.
- (1) 3" x WOF strip. Sub-cut strip into (7) 3" x 4" strips.

From the Mini Check - Cream Blue (J), cut:

- (1) ¾" x 40" strip on the bias.

Sewing Instructions

1. Create a template from each circle using template plastic and from each tag using template plastic.
2. Place a plastic template over an image from the panel fabric. When you have chosen the correct size circle for the image, create a cardboard template by tracing around the plastic circle template and cutting along the traced line.
3. Cut the chosen image ½" larger than the cardboard circle on all sides.
4. Sew a running stitch around the outer edge of the fabric circle seam allowance. Pull on the thread to have the seam allowance gather around the template (Fig. 1). Spray the fabric with spray starch, then press with a dry iron. Loosen your stitching slightly and remove the template (or leave the template if you prefer).

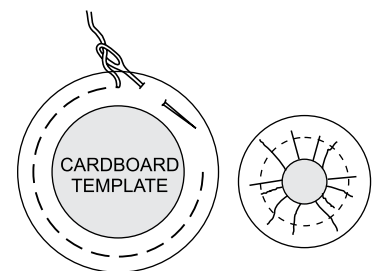


Fig. 1

5. Pin the circle to the required background (Small, Medium or Large) and slipstitch in place using a matching thread (Fig. 2). Turn under the edges on the background square a ¼" seam allowance on all sides. Set aside.

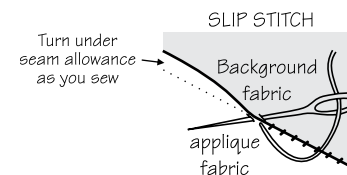


Fig. 2

6. Choose the tag fabric, trace the tag outline on the **WRONG** side of this fabric. Do not cut this tag fabric yet. Place a loop of thin ribbon at the right top side of the tag fabric. With right sides together, sew around the tag outline, being sure to leave a small opening at one side (Fig. 3). Trim the seam allowance to be a scant ¼" from the seams and clip corners. Turn right side out and press. Sew the opening closed.

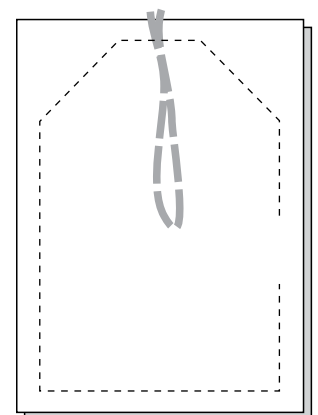


Fig. 3

7. Slip stitch the square panel image piece to the tag fabric having it centered $\frac{1}{4}$ " from the tag base (Fig. 4).

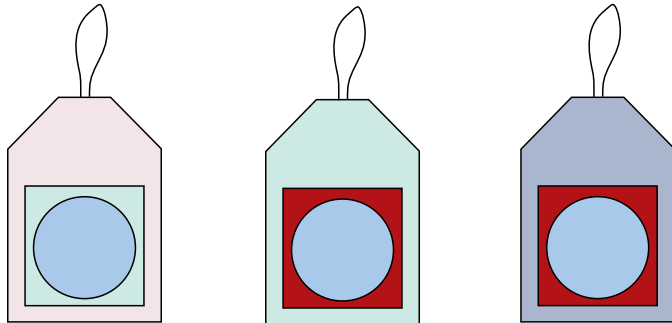


Fig. 4

8. Use one tag on the top of a gift as shown in Fig. 5.

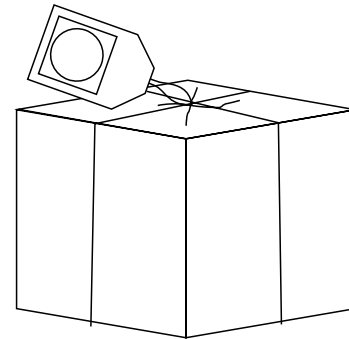


Fig. 5

9. Create a myriad of tags and then create a garland by sewing the tags to a bias strip or use them separately as present tags (Fig 6).

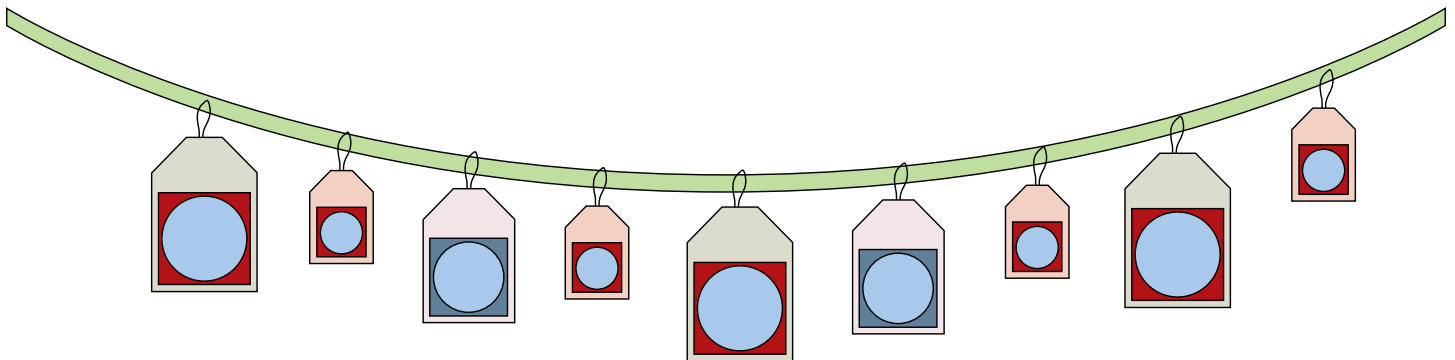
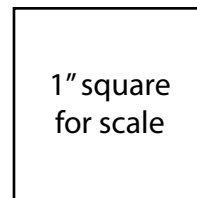
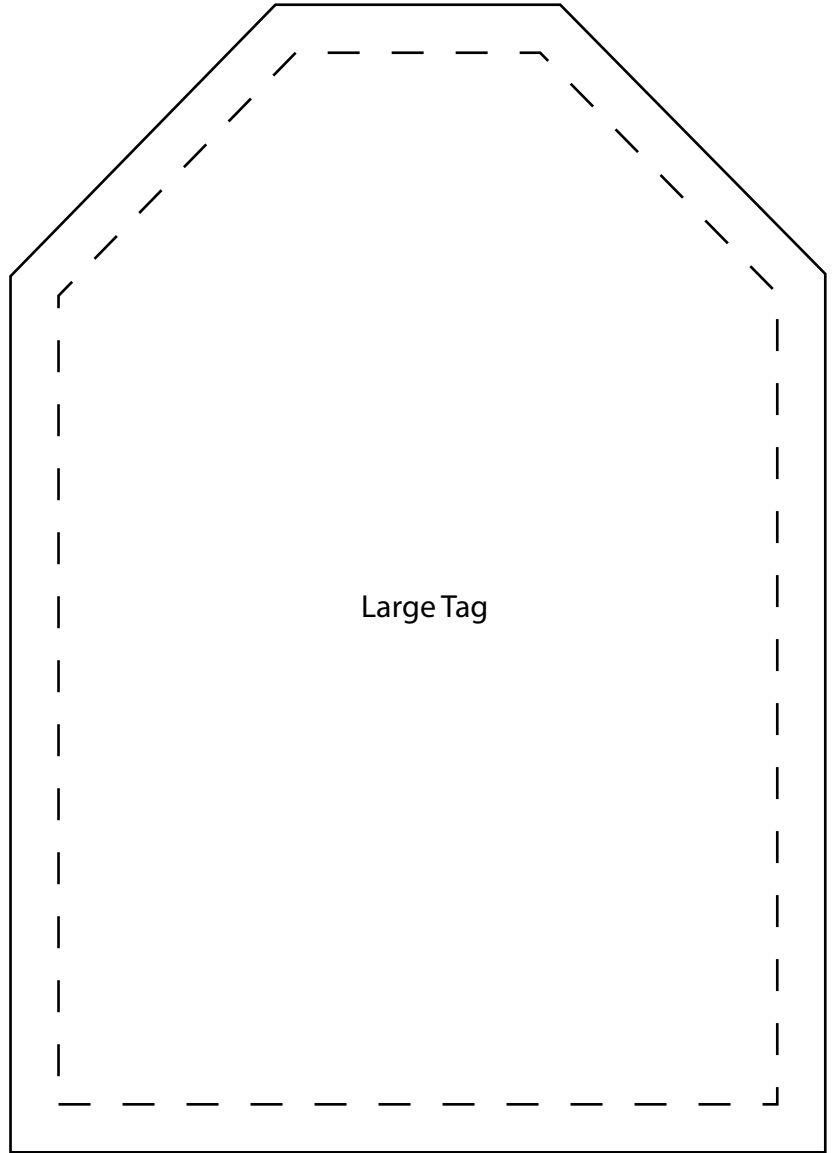
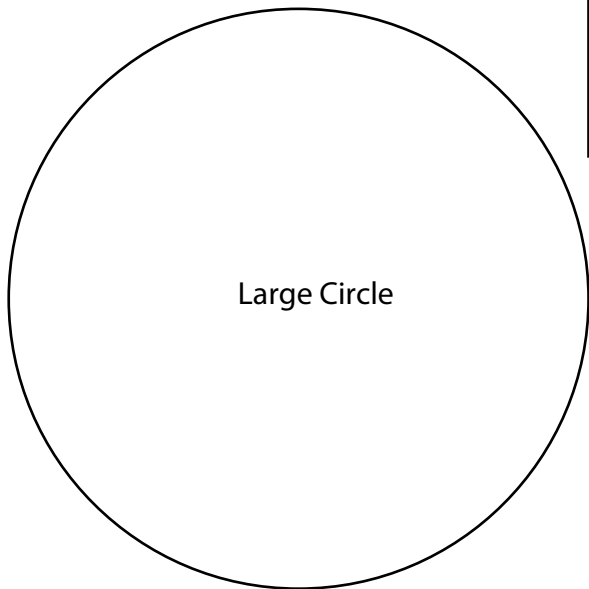
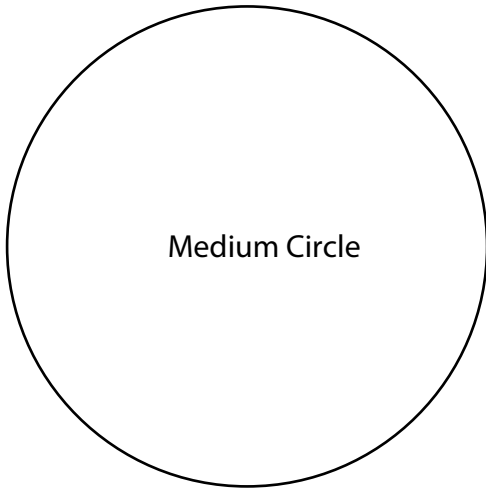
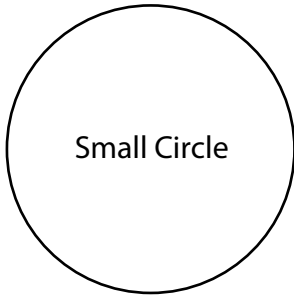
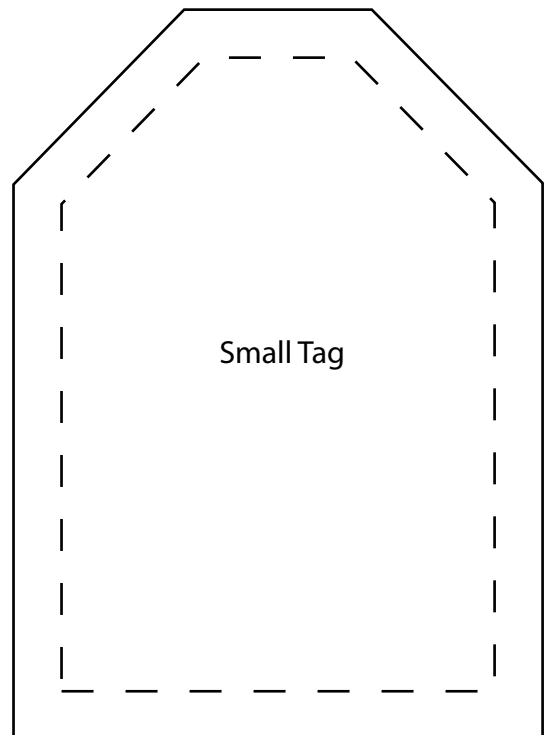
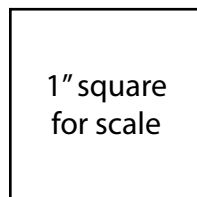
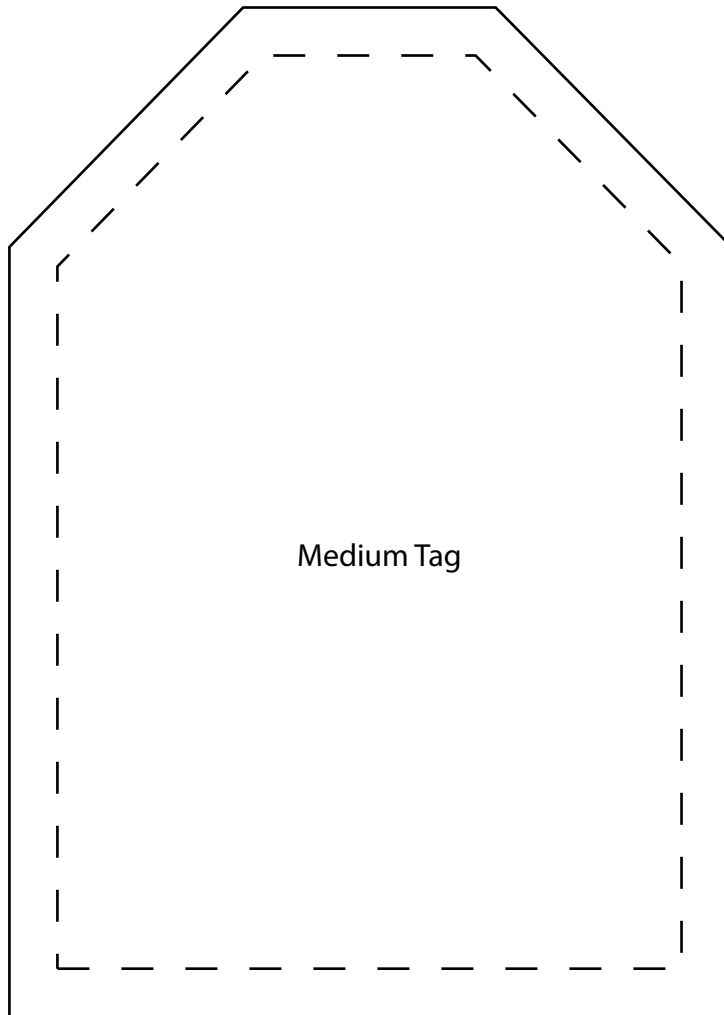


Fig. 6

Templates



Templates



Every effort has been made to ensure that all projects are error free. All the information is presented in good faith, however no warranty can be given nor results guaranteed as we have no control over the execution of instructions. Therefore, we assume no responsibility for the use of this information or damages that may occur as a result. When errors are brought to our attention, we make every effort to correct and post a revision as soon as possible. Please make sure to check www.henryglassfabrics.com for pattern updates prior to starting the project. We also recommend that you test the project prior to cutting for kits. Finally, all free projects are intended to remain free to you and are not for resale.